

Product leaflet

| Product | Model No. | Ordering No. |
|--------------|-----------|--------------|
| Battery, STD | SR 501 | R06-0108 |
| Battery, STD | SR 701 | R06-0708 |
| Battery, HD | SR 502 | T06-0101 |
| Battery, HD | SR 502 | T06-0115 |
| Battery, EX | SR 501 EX | R06-2002 |

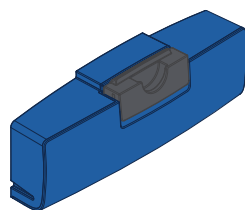
Product description

Sundström's battery-powered SR 500 and SR 700 fans use lithium-ion batteries. The SR 500 is available with two battery options, a standard (STD) battery and a heavy duty (HD) battery. Sundström's battery-powered SR 500 EX fans use a nickel-metal hydride battery. These batteries are rechargeable and can be fully charged in approx. 2 hours.

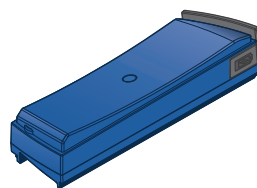
Discard used batteries at a recycling station.

Technical specification

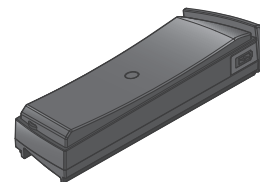
| | SR 501, SR 701 | SR 502 | SR 501 EX |
|--------------------------|--------------------------------|-----------------------|-----------------------|
| Cell type | Lithium-ion | Lithium-ion | Nickel-metal hydride |
| Nominal cell voltage | 14.8 V | 14.8 V | 13.5 V |
| Capacity | 2.2 Ah | 3.6 Ah | 2.1 Ah |
| Energy density | 33 Wh | 53 Wh | 28 Wh |
| Energy density/cell | 8.25 Wh | 6.62 Wh | 2.6 Wh |
| No. of cells per battery | 4 | 8 | 11 |
| Weight | SR 501: 280 g SR 701: 235 g | 410 g | 605 g |
| Service temperature | -10 - +55°C, < 90% RH | -10 - +55°C, < 90% RH | -10 - +40°C, < 90% RH |
| Storage temperature | -20 - +40°C, < 90% RH | -20 - +40°C, < 90% RH | -20 - +40°C, < 90% RH |



SR 701



SR 501/502



SR 501 EX



Head Office

Tel: +46 10 484 87 00

Visiting address:
Stockholmsvägen 33
SE-181 33 Lidingö

Factory

Tel: +46 10 484 87 00

Visiting address:
Västergatan 4
SE-341 50 Lagan

Product leaflet

| Product | Model No. | Ordering No. |
|--------------|-----------|--------------|
| Battery, STD | SR 501 | R06-0108 |
| Battery, STD | SR 701 | R06-0708 |
| Battery, HD | SR 502 | T06-0101 |
| Battery, HD | SR 502 | T06-0115 |
| Battery, EX | SR 501 EX | R06-2002 |

Transport

Batteries are transported either together with the fans or as spare parts.

Transport of lithium-ion batteries

| | Lithium-ion batteries in equipment | Lithium-ion batteries |
|-------------|--|--|
| Road | UN 3481 Special provision 188, ADR/ADR-S 2017 | UN 3480 Special provision 188, ADR/ADR-S 2017 |
| Sea | UN 3481 Special provision 188, IMDG Code 38-16 | UN 3480 Special provision 188, IMDG Code 38-16 |
| Air | UN 3481 Packaging instruction 967, Section II, DGR 58 | UN 3480 Packaging instruction 965, Section IB, DGR 58 |

We guarantee and can demonstrate that each battery/cell is compliant with the requirements and criteria of the UN (United Nations) test manual, Part III, Section 38.3, Revision 5, Amendment 1.

Transport of nickel-metal hydride batteries

| | Nickel-metal hydride in equipment | Nickel-metal hydride batteries |
|-------------|---|---|
| Road | Not covered by ADR | Not covered by ADR |
| Sea | UN 3496 Special provision 963, IMDG Code 37-14 (Only Hazardous Goods if more than 100 kg) | UN 3496 Special provision 963, IMDG Code 37-14 (Only Hazardous Goods if more than 100 kg) |
| Air | "Not Restricted" Special provision A199, DGR 58 | "Not Restricted" Special provision A199, DGR 58 |



Head Office

Tel: +46 10 484 87 00

Visiting address:
Stockholmsvägen 33
SE-181 33 Lidingö

Factory

Tel: +46 10 484 87 00

Visiting address:
Västergatan 4
SE-341 50 Lagan